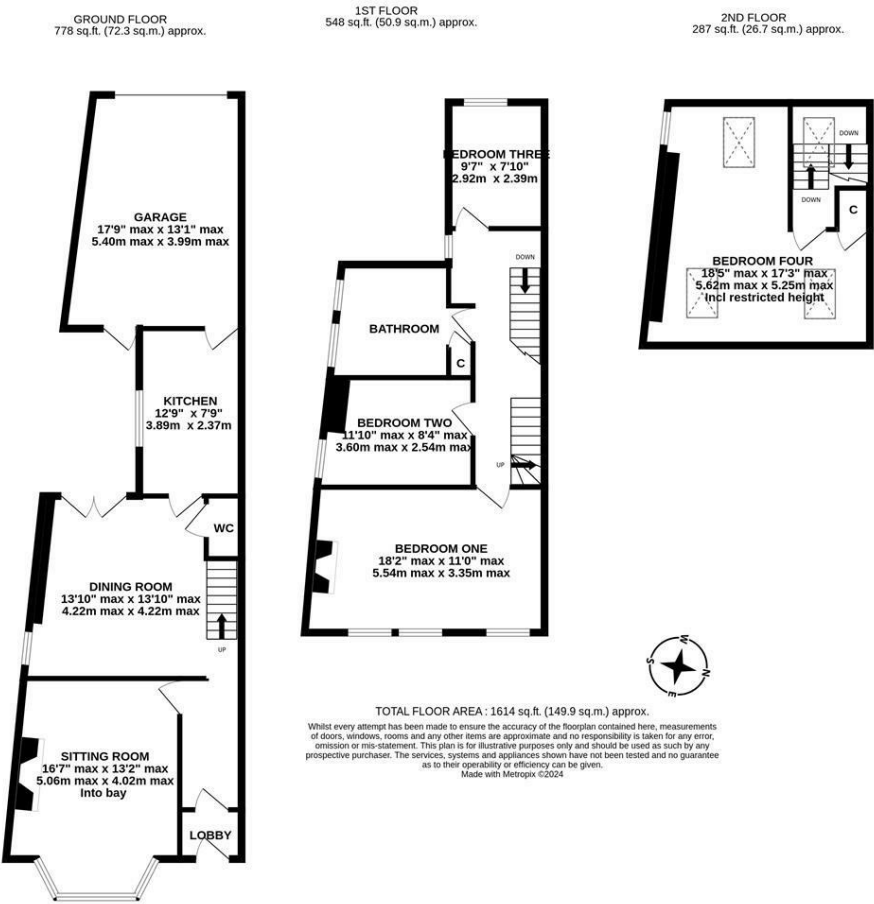




Extended Edwardian Family Home with Garage, Front Garden and Private Rear Courtyard! Ideally located in this desirable pocket of Fenham, Auburn gardens, a delightful pedestrianised terrace overlooking the gardens of St Basil & St James Church and close to Newcastle City Centre is perfectly placed to give access to surrounding greenery, the Newcastle hospitals and only a short walk from one of the region's finest independent schools.

With period features throughout and boasting over 1,600 Sq ft, the accommodation briefly comprises: entrance lobby though to entrance hall with stairs to first floor, open to dining room with under-stairs WC and French doors leading out to the rear courtyard; kitchen with fitted units and hardwood work surfaces; sitting room with walk in bay, feature wood burning stove and decorative ceiling; 17ft garage with internal courtyard and rear access to the service lane. The first floor landing gives access to three bedrooms, bedroom one measuring 18ft with feature fireplace; family bathroom complete with four piece suite and storage cupboard. To the second floor, a further 18ft bedroom with three Velux windows and a separate storage cupboard. Externally, a mature front garden laid to paving and feature pond with a mixture of planting and hedge boundaries, and to the rear, an enclosed courtyard leading to the garage. Early viewings are advised to avoid disappointment!

Extended Edwardian Family Home | Four Bedrooms | 1,614 Sq ft (149.9m2) | Sitting Room | Dining Room | Kitchen | Family Bathroom | Garage | Front Garden & Rear Courtyard | Period Features | Pedestrianised Street | GCH | Freehold | Council Tax Band C | EPC: D



Offers Over £290,000

IMPORTANT NOTE: These particulars and the descriptions and measurements herein do not constitute representation and whilst every effort has been made to ensure accuracy, this cannot be guaranteed.

